

Machines  
and Tools  
for Pipework

01/2013

# Promotion

**Super special offer**

**REMS Mini-Press ACC  
+ REMS Helix VE**  
(See page 18)



**REMS**

for Professionals



## REMS CamScope / REMS CamScope S – Brilliant pictures and videos of cavities, shafts and pipes. Documentation on MicroSD card.

Removable controller unit  
for radio signal transmission!

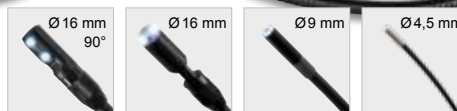


- +
- +

including  
2 GB MicroSD card



The date and time of the recording can be saved in the photo and video as an option. Immediate playback of saved recordings or transmission to other devices via MicroSD card. USB connector for direct connection to PC or laptop.



### REMS CamScope Li-Ion

Mobile, handy endoscope camera with radio signal transmission for low cost inspection and damage analysis of places with difficult access such as cavities, shafts, pipes etc. Documentation of photos and videos on MicroSD card. Handheld unit with 4 batteries 1.5 V, AA, LR6 Removable controller unit with radio signal transmission, 3.5" TFT-LCD colour display, MicroSD card slot, USB port, video out socket PAL/NTSC, integrated Li-ion battery, 3.7 V, 1.2 Ah. 2 GB MicroSD card Voltage supply/charger Li-Ion 100–240 V, 50 – 60Hz, 9 W, for controller unit. USB cable, video cable In sturdy case Optional with camera cable set 4.5-1, camera cable set 9-1 or camera cable set 16-1.



### REMS CamScope S Li-Ion – with voice recording.

Mobile, handy endoscope camera with radio signal transmission for low cost inspection and damage analysis of places with difficult access such as cavities, shafts, pipes etc. Documentation of photos and videos with voice recording on MicroSD card. Handheld unit with 4 batteries 1.5 V, AA, LR6 Removable controller unit with radio signal transmission, 3.5" TFT-LCD colour display, 3x digital zoom, MicroSD card slot, USB port, video out socket PAL/NTSC, integrated Li-ion battery, 3.7 V, 1.2 Ah. 2 GB MicroSD card Voltage supply/charger Li-Ion 100–240 V, 50 – 60Hz, 9 W, for controller unit. USB cable, video cable In sturdy case Optional with camera cable set 4.5-1, camera cable set 9-1 or camera cable set 16-1.

### REMS CamScope Li-Ion Set 16-1

Camera cable set Color 16-1, consisting of colour camera Ø 16 mm, 704 x 576 pixels, with dimmable white light LEDs and fixed focus function and 1 m formable push cable. Add-on mirror, add-on hook, add-on magnet.

Art. No. 175110 ~~349.90~~

€ **269.00**

### REMS CamScope S Li-Ion Set 16-1

Camera cable set Color 16-1, consisting of colour camera Ø 16 mm, 704 x 576 pixels, with dimmable white light LEDs and fixed focus function and 1 m formable push cable. Add-on mirror, add-on hook, add-on magnet.

Art. No. 175130 ~~399.90~~

€ **339.00**

### REMS CamScope Li-Ion Set 9-1

Camera cable set Color 9-1, consisting of colour camera Ø 9 mm, 640 x 480 pixels, with dimmable white light LEDs and fixed focus function and 1 m formable push cable. Add-on mirror, add-on hook, add-on magnet.

Art. No. 175111 ~~329.90~~

€ **279.00**

### REMS CamScope S Li-Ion Set 9-1

Camera cable set Color 9-1, consisting of colour camera Ø 9 mm, 640 x 480 pixels, with dimmable white light LEDs and fixed focus function and 1 m formable push cable. Add-on mirror, add-on hook, add-on magnet.

Art. No. 175131 ~~409.90~~

€ **349.00**

### REMS CamScope Li-Ion Set 4,5-1

Camera cable set Color 4.5-1, consisting of colour camera Ø 4.5 mm, 320 x 240 pixels, with dimmable white light LEDs and fixed focus function and 1 m formable push cable. Ideal for inspecting small pipe bends and narrow places.

Art. No. 175112 ~~369.90~~

€ **299.00**

### REMS CamScope S Li-Ion Set 4,5-1

Camera cable set Color 4.5-1, consisting of colour camera Ø 4.5 mm, 320 x 240 pixels, with dimmable white light LEDs and fixed focus function and 1 m formable push cable. Ideal for inspecting small pipe bends and narrow places.

Art. No. 175132 ~~449.90~~

€ **379.00**



### 900 mm push cable extension

couplable up to a working length of 4.5 m  
Art. No. 175105

€ **31.50**

### Camera cable set Color 16-1 90°

90° angled colour camera Ø 16 mm, 640x480 pixels, with 1 m flexible push cable.  
Art. No. 175106

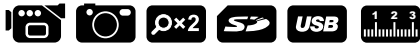


€ **124.70**

**REMS CamSys – electronic camera inspection system for low-cost inspection and damage analysis.**



+ With electronic metering



**REMS CamSys Li-Ion Set S-Color 30 H**

For pipes Ø 50–150 mm, drains, shafts, stacks and other cavities. Documentation of pictures and videos on SD card with specification of date, time and insertion depth of the camera. Controller unit in microprocessor technology with 3.5" TFT-LCD colour display, SD card slot, USB port, video out socket PAL/NTSC, integrated Li-ion battery, 3.7 V, 2.5 Ah, in sturdy, impact-proof plastic housing, spray protected. 2 m connecting cable from the controller unit to the camera cable set, voltage supply/charger 100–240 V AC, 50–60 Hz, 13 W, SD card 2 GB, USB cable, video cable, in sturdy case. Camera cable set S-Color 30 H with high resolution special colour camera Ø 25 mm with CMOS image sensor and 30 m push cable Ø 5.4 mm, flexible, in the hasp with electronic metering.

Art. No. 175010 ~~1,980.00~~

€ **1,880.00**



**REMS CamSys Li-Ion Set S-Color 10 K**

For pipes Ø 40–150 mm, drains, shafts, stacks and other cavities. Documentation of pictures and videos on SD card with specification of date and time. Controller unit in microprocessor technology with 3.5" TFT-LCD colour display, SD card slot, USB port, video out socket PAL/NTSC, integrated Li-ion battery, 3.7 V, 2.5 Ah, in sturdy, impact-proof plastic housing, spray protected. 2 m connecting cable from the controller unit to the camera cable set, voltage supply/charger 100–240 V AC, 50–60 Hz, 13 W, SD card 2 GB, USB cable, video cable, in sturdy case. Camera cable set S-Color 10 K with high resolution special colour camera Ø 25 mm with CMOS image sensor and 10 m push cable Ø 3.6 mm, very flexible, in cable cage.

Art. No. 175008 ~~1,480.00~~

€ **1,380.00**

**REMS Picus S1 – the low cost alternative**



**... now with REMS Simplex 2 drill stand**

Robust, handy drill stand for core drilling up to Ø 200 mm. Drill column made of rigid, unbendable square precision steel tube Ø 50 mm, cold solidified, with extra narrow tolerance, for low-vibration guiding of the slide

**REMS Picus S1 Set Simplex 2**

Electric diamond core drilling machine for core drilling in concrete, steel-reinforced concrete up to Ø 102 (132) mm, masonry and others up to Ø 162 mm. For dry or wet drilling, hand held or with drill stand. Drive unit with drilling crown male connection thread UNC 1½, female connection thread G ½, maintenance-free gear with safety slip clutch, 230 V, 50 – 60 Hz, 1850 W universal motor. Multifunction electronics with soft starting, idle speed limiting, overload protection, blocking protection. Touch switch with lock Personal protection switch (PRCD). Load speed drilling spindle 580 rpm. Water supply device with adjustable shutoff valve and quick coupling with water stop and ½" hose connection. Stabiliser. Drill start aid G ½ with Ø 8 mm drill, size 3 Allen key. Size 32 opened ended wrench. In sturdy steel case. REMS Simplex 2 drill stand including fastening set for masonry and concrete. Without diamond core drilling crowns.

Art. No. 180032 ~~1,920.00~~

€ **1,199.00**

## One system – 4 applications!

### Ideal for plumbers

German  
quality product



#### REMS Picus SR Set Titan

Electric diamond core drilling machine with speed regulation. For core drilling in concrete, steel-reinforced concrete up to Ø 162 (200) mm, masonry and others up to Ø 250 mm. For dry or wet drilling, hand held or with drill stand. Drive machine with drilling crown connection thread UNC 1¼ male, G ½ female, maintenance-free 2-step gear with safety slip clutch, 110 V, 50–60 Hz, 2200 W universal motor. Stepless electronic speed regulation 200 rpm to 500 rpm (1st gear) or 500 rpm to 1200 rpm (2nd gear), overheating protection. Multifunction electronics with soft starting, idle speed limiting, overload protection, blocking protection. Touch switch with lock. Personal protection switch (PRCD). Water supply device with adjustable shut-off valve and quick coupling with water stop and ½" hose connection. Stabiliser. Single open ended wrench size 32. In sturdy steel case. Drill stand REMS Titan including fastening kit for masonry and concrete. Without diamond core drilling crowns.

Art. No. 183022 ~~2,180,00~~

€ **1,799.00**

#### REMS Picus SR Set 62-82-132 Titan

Same as Art. No. 183022, but with REMS Universal diamond core drilling crowns UDKB Ø 62, 82, 132 mm.

Art. No. 183023 ~~2,780,00~~

€ **2,199.00**

... now with REMS Titan drill stand – for highest demands. For core drilling up to Ø 300 mm.

REMS Picus S2/3.5 – for core drillings in steel-reinforced concrete etc. up to Ø 300 mm.



#### REMS Picus S2/3,5 Set Titan

Electric diamond core drilling machine for core drilling in concrete, steel-reinforced concrete, masonry of all kinds, natural stone, asphalt, screeds of all kind, up to Ø 300 mm. For dry or wet drilling with drill stand. Drive machine with drilling crown male connection thread UNC 1¼, maintenance-free 2-step gear with safety slip clutch, 110 V, 50–60 Hz, 3420 W universal motor. Multifunction electronics with soft starting, idle speed limiting, overload protection, blocking protection. Rocker switch. Personal protection switch (PRCD). Load speed drilling spindle 320 rpm, 760 rpm. Water supply device with adjustable shutoff valve and quick coupling with water stop and ½" hose connection. Easy loosening ring. Single open-ended wrench size 32. Drill stand REMS Titan including fastening kit for masonry and concrete. Without diamond core drilling crowns.

Art. No. 180030 ~~3,370,00~~

€ **2,899.00**

REMS Pull L Set W – ideal for the removal of drilling mud during wet drilling with REMS drill stands.



Water suction device

Flat-folded paper filter PES

#### REMS Pull L Set W

REMS Pull L Set with water-resistant flat-folded paper filter PES and water suction device.

Art. No. 185503 ~~800,00~~

€ **699.00**

REMS Pull M Set D – ideal for the extraction of hazardous dust when dry drilling with REMS Picus, S1, Picus SR, Picus S3, amongst others.

Dust class M<sup>1)</sup>

UNC 1¼ male

G ½ male



Suction rotor

#### REMS Pull M Set D

REMS Pull M Set with suction rotor for dust extraction.

Art. No. 185504 ~~785,00~~

€ **679.00**

# Extraction of health hazardous dusts in accordance with EN 60335-2-69

When processing building materials containing minerals such as concrete, steel-reinforced concrete, masonry, screed, large quantities of hazardous mineral dust containing quartz are produced. Inhalation of mineral dust is harmful to health. The use of at least an industrial vacuum cleaner of dust class M in accordance with EN 60335-2-69 is prescribed for the extraction of hazardous dust<sup>1)</sup>. REMS Pull M, wet and dry industrial vacuum cleaner, certified for extracting hazardous dust of dust class M, see below.

## REMS Krokodil – chasing instead of chiselling.



### REMS Krokodil 125 Basic-Pack

Electric diamond chasing and cutting grinder for chasing and cutting, e.g. concrete, steel-reinforced concrete, masonry of all kinds, natural stone, screeds of all kinds. Chase depth ≤ 38 mm, continuously adjustable. Chasing width ≤ 43 mm, stepped with spacer discs 3, 6, 10, 20 mm. Drive machine with drive shaft Ø 22.2 mm, for 1 or 2 diamond cutting discs in accordance with EN 13236, Ø ≤ 125 mm, with maintenance-free gear with safety slip clutch, 110 V, 50–60 Hz, 1,850 W universal motor. Multifunction electronics with soft start, idling speed limiting, overload protection. Safety switch. Load speed 5,000 rpm. Suction nozzle for connecting a vacuum cleaner/dust extractor. Pin wrench size 13. In sturdy plastic case.  
Art. No. 185010 ~~679,00~~

+ gift package with a value of € 59.00  
1 bodywarmer



Art. No. 185X01 € **599.<sup>00</sup>**



### REMS universal diamond cutting disc Eco Ø 125 mm

Sintered, high temperature-resistant, with metal body in accordance with EN 13236  
Art. No. 185020 € **12.<sup>90</sup>**

### REMS universal diamond cutting disc LS-Turbo Ø 125 mm

Laser-welded, high temperature-resistant, for fast cuts and cuts in hard materials, with metal body in accordance with EN 13236  
Art. No. 185021 € **21.<sup>90</sup>**

### REMS universal diamond cutting disc LS H-P Ø 125 mm

High-performance, laser-welded, high temperature-resistant, for fast cuts and cuts in very hard materials, long life, with metal body in accordance with EN 13236.  
Art. No. 185022 € **59.<sup>90</sup>**

## REMS Pull – for dry and wet suction. Constantly high suction performance by permanent automatic filter cleaning. Certified for collecting health hazardous dusts in accordance with EN 60335-2-69<sup>1)</sup>.

### REMS Pull

Electric dry and wet industrial vacuum cleaner / dust extractor. For extraction of dusts, dirt and liquids. Ideal for dust extracting when chasing, cutting, drilling, core drilling and grinding. Bypass motor 110 V, 50–60 Hz, 1,200 W. On/Off switch and switch for automatic filter cleaning with integrated green LED. Suction power switch for continuous adjustment of the air volume flow ≤ 61 l/s. Filling level limit with automatic switch-off. Automatic filter cleaning. Appliance socket for power tools up to 2,200 W, with electronic automatic on/off. Large tank capacity 35 l, filling volume for liquids 19 l. Mobile, 2 wheels, steering roller/steering roller with brake. Connecting cable 7.5 m. 1 paper filter bag, 1 flat folded paper filter. 2 suction hoses 0.5 m, handle piece, suction hose 2.5 m, suction hose extension 2.5 m, handle, 2 suction pipes 0.5 m. Attachment for surfaces wet/dry 300 mm with rollers, brush strips, rubber lips. Attachment for joints. Adapter suction hose/power tool. Integrated holders for connecting cable, suction hose and accessories. In a box.

**REMS Pull M with antistatic system:** static charge is discharged via the earthed upper section of the vacuum cleaner by electrically conductive suction hoses, handle piece E, electrically conductive suction hose E, electrically conductive suction hose extension E and electrically conductive suction hose connecting nozzles.

**New**



### REMS Pull L Set

Certified as an industrial vacuum cleaner and dust extractor for collecting health hazardous dusts of dust class L<sup>1)</sup>. Exposure limit/work place limit > 1 mg/m<sup>3</sup>, penetration level ≤ 1 %.  
Art. No. 185500 ~~479,00~~

€ **449.<sup>00</sup>**

### REMS Pull M Set

Certified as an industrial vacuum cleaner and dust extractor for collecting health hazardous dusts of dust class M<sup>1)</sup>. Exposure limit/work place limit > 0.1 mg/m<sup>3</sup>, penetration level ≤ 0.1 %.  
With antistatic system. Electrically conductive suction hose E. Electronic volume flow monitor, selector switch suction hose diameter, plug for the suction hose connecting nozzle.  
Art. No. 185501 ~~599,00~~

€ **549.<sup>00</sup>**

<sup>1)</sup> Observe the national regulations for the collection and disposal of health hazardous dusts.

## REMS Universal diamond core drilling crowns

Inductively soldered on fully automatic soldering machines for constant high quality of the soldered connection. Drilling tubes with soldered diamond segments can be resoldered by simple hard soldering.

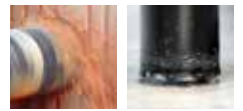
Universally usable for many materials, for dry and wet drilling, hand held or with drill stand. Uniform UNC 1/4 female connection thread. Drilling depth 420 mm. Diamond segments with wedge-shaped cut ("roof shape") for fast, easy and quiet drilling. Specially developed, high quality diamond segments with high diamond content and special bonding for excellent drilling performance and very long life. Ideal for universal use in steel-reinforced concrete and masonry.

Can be driven by all REMS Picus drive units and suitable drive units of other makes with a UNC 1/4 male connection thread.

**Inductively soldered!  
Resolderable!**



**-35%**



German quality product

| Ø × drilling depth × connection |    | Art. No. | €      | Offer €       |
|---------------------------------|----|----------|--------|---------------|
| UDKB 32 × 420 × UNC 1/4         | 4  | 181010   | 99.00  | <b>64.00</b>  |
| UDKB 42 × 420 × UNC 1/4         | 4  | 181015   | 119.00 | <b>77.00</b>  |
| UDKB 52 × 420 × UNC 1/4         | 5  | 181020   | 122.00 | <b>79.00</b>  |
| UDKB 62 × 420 × UNC 1/4         | 6  | 181025   | 149.00 | <b>97.00</b>  |
| UDKB 72 × 420 × UNC 1/4         | 7  | 181030   | 164.00 | <b>107.00</b> |
| UDKB 82 × 420 × UNC 1/4         | 7  | 181035   | 165.00 | <b>107.00</b> |
| UDKB 92 × 420 × UNC 1/4         | 8  | 181040   | 177.00 | <b>115.00</b> |
| UDKB 102 × 420 × UNC 1/4        | 8  | 181045   | 182.00 | <b>118.00</b> |
| UDKB 112 × 420 × UNC 1/4        | 9  | 181050   | 207.00 | <b>135.00</b> |
| UDKB 125 × 420 × UNC 1/4        | 10 | 181057   | 247.00 | <b>161.00</b> |
| UDKB 132 × 420 × UNC 1/4        | 11 | 181060   | 267.00 | <b>174.00</b> |
| UDKB 152 × 420 × UNC 1/4        | 12 | 181065   | 303.00 | <b>197.00</b> |
| UDKB 162 × 420 × UNC 1/4        | 12 | 181070   | 325.00 | <b>211.00</b> |
| UDKB 182 × 420 × UNC 1/4        | 12 | 181075   | 336.00 | <b>218.00</b> |
| UDKB 200 × 420 × UNC 1/4        | 12 | 181080   | 346.00 | <b>225.00</b> |
| UDKB 225 × 420 × UNC 1/4        | 13 | 181085   | 445.00 | <b>289.00</b> |
| UDKB 250 × 420 × UNC 1/4        | 14 | 181090   | 505.00 | <b>328.00</b> |
| UDKB 300 × 420 × UNC 1/4        | 22 | 181095   | 560.00 | <b>364.00</b> |

## REMS universal diamond core drilling crowns LS (LASER)

Laser-welded on fully automatic welding machines for consistent high quality of the weld. High temperature-resistant, even under extreme temperature load, no desoldering of the segments due to overheating.

Universally usable for many materials, for dry and wet drilling, hand held or with drill stand. Uniform UNC 1/4 female connection thread. Drilling depth 420 mm. Diamond segments with wedge-shaped cut ("roof shape") for fast, easy and quiet drilling. Specially developed, high quality diamond segments with high diamond content and special bonding for excellent drilling performance and very long life. Ideal for universal use in steel-reinforced concrete and masonry.

Can be driven by all REMS Picus drive units and suitable drive units of other makes with a UNC 1/4 male connection thread.

**Laser-welded!  
High temperature-resistant!**



**-35%**



| Ø × drilling depth × connection |    | Art. No. | €      | Offer €       |
|---------------------------------|----|----------|--------|---------------|
| UDKB LS 32 × 420 × UNC 1/4      | 1  | 181410   | 109.00 | <b>71.00</b>  |
| UDKB LS 42 × 420 × UNC 1/4      | 4  | 181415   | 131.00 | <b>85.00</b>  |
| UDKB LS 52 × 420 × UNC 1/4      | 5  | 181420   | 135.00 | <b>88.00</b>  |
| UDKB LS 62 × 420 × UNC 1/4      | 6  | 181425   | 164.00 | <b>107.00</b> |
| UDKB LS 72 × 420 × UNC 1/4      | 6  | 181430   | 181.00 | <b>118.00</b> |
| UDKB LS 82 × 420 × UNC 1/4      | 7  | 181435   | 182.00 | <b>118.00</b> |
| UDKB LS 92 × 420 × UNC 1/4      | 8  | 181440   | 195.00 | <b>127.00</b> |
| UDKB LS 102 × 420 × UNC 1/4     | 9  | 181445   | 201.00 | <b>131.00</b> |
| UDKB LS 112 × 420 × UNC 1/4     | 9  | 181450   | 228.00 | <b>148.00</b> |
| UDKB LS 125 × 420 × UNC 1/4     | 10 | 181457   | 266.00 | <b>173.00</b> |
| UDKB LS 132 × 420 × UNC 1/4     | 10 | 181460   | 294.00 | <b>191.00</b> |
| UDKB LS 152 × 420 × UNC 1/4     | 11 | 181465   | 334.00 | <b>217.00</b> |
| UDKB LS 162 × 420 × UNC 1/4     | 12 | 181470   | 358.00 | <b>233.00</b> |
| UDKB LS 182 × 420 × UNC 1/4     | 13 | 181475   | 370.00 | <b>241.00</b> |
| UDKB LS 200 × 420 × UNC 1/4     | 14 | 181480   | 381.00 | <b>248.00</b> |

**The low price Starter Set.  
Ideal for pipework installers.**

**Super  
price**



**REMS UDKB Set 52-112-132**

Ø 52, 112, 132 mm Art. No. 181102 596-00

€ **387.00**

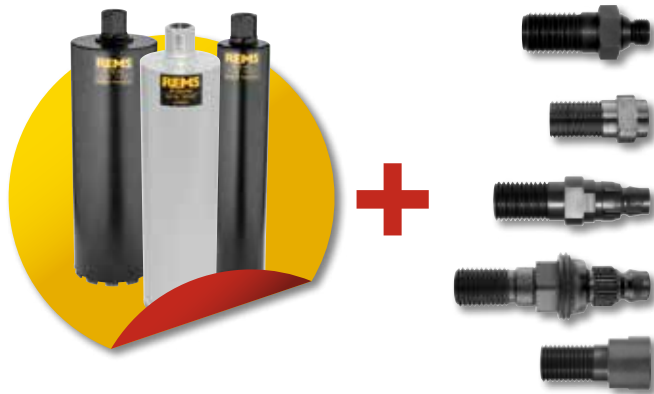


**REMS UDKB LS Set 52-112-132**

Ø 52, 112, 132 mm Art. No. 181112 657-00

€ **427.00**

Adapter for connection of REMS Universal diamond core drilling crowns on drive units with other connection thread



**+ Adapter free\***

\*When buying 3 Universal diamond core drilling crowns or more you get a free adapter of your choice.

**Adapter UNC 1 1/4 male – G 1/2 male**

Art. No. 180052

€ **51.00** /piece

**Adapter UNC 1 1/4 male – G 1/2 female**

Art. No. 180056

€ **30.20** /piece

**Adapter UNC 1 1/4 male – Hilti BI**

Art. No. 180053

€ **30.20** /piece

**Adapter UNC 1 1/4 male – Hilti BU**

Art. No. 180054

€ **71.80** /piece

**Adapter UNC 1 1/4 male – Würth**

Art. No. 180055

€ **89.00** /piece

**REMS Helix VE – drilling, screw driving and deburring.**



LED work light

REMS TECHNOLOGY  
**LI-ION PLUS**

only 1.3 kg

**New**



**REMS tile drilling Set 6-8-10**

Diamond-tipped dry drilling crowns with special wax filling. For ceramics, fine clay, granite, marble and other materials. 3 tile drill bits Ø 6, 8, 10 mm, drilling aid with vacuum attachment. For electric drive by power drill/screwdriver.

Art. No. 181700 145,-00



€ **99.00**

**REMS Helix VE Li-Ion Set**

Cordless power drill/screwdriver with Vario-Electronics (VE) for drilling in steel, stone, Ø ≤ 10 mm, wood Ø ≤ 28 mm and other materials and for screwing in/loosening screws Ø ≤ 7 mm. Drive machine with keyless quick chuck, clamping range 0.8–10 mm, right and left hand rotation. Electromechanical drive with powerful battery motor 14.4 V, 300 W, 2-step robust planetary gear. 2 continuously adjustable speed ranges from 0 to 300 rpm and 0 to 1,250 rpm, 25 torque stages plus drilling stage, high torque of 31 Nm in the low speed range. Safety switch. Integrated LED work light. Belt clip. Li-Ion 14.4 V, 1.6 Ah battery, Li-Ion/Ni-Cd 230 V, 50–60 Hz, 65 W rapid charger. 1 bit with double blade slot/cross-head, 50 mm long. In carrying bag.

Art. No. 190010 329,-00

+ gift package with a value of € 169.20

1 set of bits free

A second 14.4 V, 3.2 Ah Li-Ion battery free

1 bodywarmer

Art. No. 190X02 € **299.00**



**REMS REG 10–54 E**

Outside/inside pipe deburrer for pipes Ø 10–54 mm, Ø 1/2–2 1/8".

For electric drive by power drill/screwdriver.

Art. No. 113835 85,-50

€ **69.00**



**Driver for REMS REG 10–42**

for electric drive by power drill/screwdriver.

Art. No. 113815

€ **31.50**



**REMS REG 10–42**

Outside/inside pipe deburrer for pipes Ø 10–42 mm, Ø 1/2–1 1/4".

Art. No. 113810

€ **74.70**

# REMS Puma VE – the robust universal saw with anti-vibration system.

Quick saw blade change without tools.

Adjustable support shoe.

Saw blade can be inserted turned 180°.

**New**



1300 W – 3,8 kg



## REMS Puma VE Set

Electric universal reciprocating saw with Vario-Electronics (VE) for free hand sawing, with anti-vibration system. Drive machine with D-shaped handle with soft grip, maintenance-free, water and dust-proof oscillation drive, powerful 230 V, 50–60 Hz, 1,300 W universal motor, safety switch, connecting cable 4 m. Continuous electronic stroke speed control (accelerator switch) 0 to 2,800 rpm. 30 mm stroke. Saw blade holder with quick-change system. Adjustable support shoe. 1 REMS saw blade 210-1.8/2.5. In sturdy steel case.

Art. No. 560023 ~~269.00~~

€ **199.<sup>00</sup>**

## REMS saw blades for metal

→ REMS Puma, REMS Cat, REMS Akku-Cat, REMS Tiger, etc.



| Designation   | Length mm | Tooth pitch mm | Material*       | Teeth        | Colour | Quantity pieces | Art. No. | List price € | Promotion price € |
|---|-----------|----------------|-----------------|--------------|--------|-----------------|----------|--------------|-------------------|
| REMS saw blade 150-1 sheet metal, metal, also stainless steel, ≥ 1.2 mm   | 150       | 1              | HSS-Bi flexible | corrugated   | red    | 5               | 561105   | 17.00        | —                 |
| REMS saw blade 200-1 sheet metal, metal, also stainless steel, ≥ 1.2 mm   | 200       | 1              | HSS-Bi flexible | corrugated   | red    | 5               | 561106   | 22.30        | —                 |
| REMS saw blade 90-1.4, curved blade metal, also stainless steel, ≥ 1.5 mm | 90        | 1.4            | HSS-Bi          | corrugated   | red    | 5               | 561107   | 14.10        | 12.20             |
| REMS saw blade 150-1.4 metal, also stainless steel, ≥ 1.5 mm              | 150       | 1.4            | HSS-Bi flexible | corrugated   | red    | 5               | 561104   | 17.80        | 14.00             |
| REMS saw blade 200-1.4 metal, also stainless steel, ≥ 1.5 mm              | 200       | 1.4            | HSS-Bi flexible | corrugated   | red    | 5               | 561108   | 22.30        | —                 |
| REMS saw blade 100-1.8 metal, also stainless steel, ≥ 2 mm                | 100       | 1.8            | HSS-Bi flexible | corrugated   | red    | 5               | 561101   | 15.20        | 12.00             |
| REMS saw blade 150-1.8 metal, also stainless steel, ≥ 2 mm                | 150       | 1.8            | HSS-Bi flexible | corrugated   | red    | 5               | 561103   | 17.80        | 14.00             |
| REMS saw blade 200-1.8 metal, also stainless steel, ≥ 2 mm                | 200       | 1.8            | HSS-Bi flexible | corrugated   | red    | 5               | 561102   | 22.30        | 17.50             |
| REMS saw blade 200-2.5 metal, also stainless steel, ≥ 3 mm                | 200       | 2.5            | HSS-Bi flexible | straight-set | red    | 5               | 561109   | 22.30        | —                 |
| REMS saw blade 280-2.5 metal, also stainless steel, ≥ 3 mm                | 280       | 2.5            | HSS-Bi flexible | straight-set | red    | 5               | 561112   | 28.30        | —                 |

## REMS saw blades for wood and metal

→ REMS Puma, REMS Cat, REMS Akku-Cat, REMS Tiger, etc.



| Designation  | Length mm | Tooth pitch mm | Material*       | Teeth        | Colour | Quantity pieces | Art. No. | List price € | Promotion price € |
|--|-----------|----------------|-----------------|--------------|--------|-----------------|----------|--------------|-------------------|
| REMS saw blade 210-1.8/2.5 round tip, no sticking pallets, wood, wood with nails, metal ≥ 2.5 mm | 210       | Combo 1,8/2,5  | HSS-Bi flexible | straight-set | black  | 5               | 561113   | 24.40        | —                 |
| REMS saw blade 150-2.5 wood, wood with nails, pallets, metal ≥ 3 mm                              | 150       | 2.5            | HSS-Bi flexible | straight-set | black  | 5               | 561110   | 17.00        | 13.60             |
| REMS saw blade 225-2.5, extra thick, for disassembly wood, wood with nails, metal ≥ 3 mm         | 225       | 2.5            | HSS-Bi          | corrugated   | black  | 3               | 561114   | 22.00        | —                 |
| REMS saw blade 300-2.5, extra thick, for disassembly wood, wood with nails, metal ≥ 3 mm         | 300       | 2.5            | HSS-Bi          | corrugated   | black  | 3               | 561116   | 29.30        | —                 |
| REMS saw blade 300-4.2 wood  | 300       | 4.2            | WS              | straight-set | black  | 5               | 561111   | 20.60        | 16.00             |
| REMS saw blade 225-3.2/5.0 wood, wood with nails   | 225       | Combo 3,2/5,0  | HSS-Bi flexible | straight-set | black  | 5               | 561117   | 26.00        | —                 |
| REMS saw blade 300-5.0/6.35 green wood   | 300       | Combo 5,0/6,35 | WS              | straight-set | black  | 5               | 561118   | 28.30        | —                 |
| REMS saw blade 150-6.35 wood   | 150       | 6,35           | WS              | straight-set | black  | 5               | 561119   | 12.00        | —                 |

## REMS saw blades for different purposes

→ REMS Puma, REMS Cat, REMS Akku-Cat, REMS Tiger, etc.



| Designation  | Length mm | Tooth pitch mm | Material* | Teeth        | Colour | Quantity pieces | Art. No. | List price € | Promotion price € |
|--|-----------|----------------|-----------|--------------|--------|-----------------|----------|--------------|-------------------|
| REMS saw blade 150-4.2 breeze blocks, plasterboard                     | 150       | 4.2            | WS        | straight-set | white  | 5               | 561115   | 13.50        | 11.00             |
| REMS saw blade 225-8.5 breeze blocks, hard wood                        | 225       | 8,5            | HM        | straight-set | white  | 1               | 561120   | 38.80        | 29.40             |
| REMS saw blade 300-8.5 breeze blocks, hard wood                        | 300       | 8,5            | HM        | straight-set | white  | 1               | 561121   | 46.50        | 35.20             |
| REMS saw blade 400-8.5 breeze blocks, hard wood                        | 400       | 8,5            | HM        | straight-set | white  | 1               | 561122   | 66.70        | 50.50             |
| REMS saw blade 235-10.2 breeze blocks, pumice, brick                   | 235       | 10,2           | HM        | straight     | white  | 1               | 561123   | 53.90        | 40.80             |
| REMS saw blade 300-10.2 breeze blocks, pumice, brick                   | 300       | 10,2           | HM        | straight     | white  | 1               | 561124   | 62.60        | 47.40             |
| REMS saw blade 300-10.2, extra high blade breeze blocks, pumice, brick | 300       | 10,2           | HM        | straight     | white  | 1               | 561125   | 74.20        | 56.10             |
| REMS saw blade 200 cast iron etc.                                      | 200       |                | HM-G      |              | white  | 2               | 561126   | 21.90        | 16.70             |

\*HSS-Bi: bimetal high speed steel; WS: tool steel; HM: carbide; HM-G: carbide-granulate

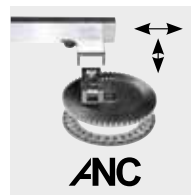
**REMS Cat ANC VE – saws everything any-  
where. Extremely versatile and powerful.**



German quality product



1050 W – 3.0 kg



ANC – for maximum stress

### REMS Cat ANC VE

Electric universal reciprocating saw with Vario Electronics (VE) for free-hand sawing. Drive unit with spade handle, maintenance-free, water and dust proof oscillation drive with all-round needle bearing crank drive (ANC), aggressive orbital stroke, powerful 110 V, 50–60 Hz, 1050 W universal motor, safety switch. Stepless electronic speed control (accelerator switch) 0–2400 rpm. Universal saw blade holder. Allen key. 1 REMS universal saw blade 150-1,8/2,5. In sturdy steel case.

Art. No. 560040 369.00

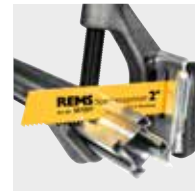
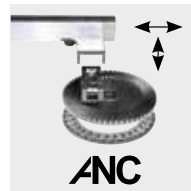
€ **259.<sup>00</sup>**

**REMS Tiger ANC – the pipe reciprocating  
saw. Saws easily, fast and at right angles.**



German quality product

1050 W – only 3 kg



ANC – for maximum stress

### REMS Tiger ANC Set

Electric pipe reciprocating saw for fast, easy, right-angled sawing with guide holder and for free-hand sawing. Drive unit with straight machine handle, maintenance-free, water and dust proof oscillation drive with all-round needle bearing crank drive (ANC), aggressive orbital stroke, powerful 110 V, 50–60 Hz, 1050 W universal motor, safety switch. Fixed number of strokes 2400 rpm. Overload protection. Universal saw blade holder. Allen key. Guide holder up to 2". 2 REMS special saw blades 2"/140-3,2. In sturdy steel case.

Art. No. 560020 479.00

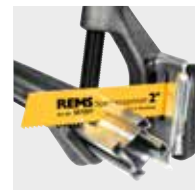
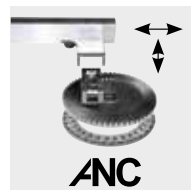
€ **399.<sup>00</sup>**

**REMS Tiger ANC SR – with Speed-Regulation.  
Saws easily, quickly and at right angles.**



German quality product

1400 W – 3.1 kg



ANC – for maximum stress

### REMS Tiger ANC SR Set

Electric pipe reciprocating saw with Speed Regulation (VE) for fast, easy, right-angled sawing with guide holder and for free-hand sawing. Drive unit with straight machine handle, maintenance-free, water and dust proof gear with all-round needle bearing crank drive (ANC), fixed orbital stroke, powerful 110 V, 50–60 Hz, 1400 W universal motor, safety switch. Stepless electronic speed control 700–2200 rpm with sensitive start-sawing, speed generator, temperature monitor and stall protection. Universal saw blade holder. Allen key. Guide holder up to 2". 2 REMS special saw blades 2"/140-3,2. In sturdy steel case.

Art. No. 560026 564.00

€ **469.<sup>00</sup>**

## REMS special saw blades

→ REMS Tiger



REMS

| Designation   | Ø inches/<br>Length mm | Tooth pitch<br>mm | Material* | Teeth      | Colour | Quantity<br>pieces | Art. No. | List<br>price € | Promotion<br>price € |
|---|------------------------|-------------------|-----------|------------|--------|--------------------|----------|-----------------|----------------------|
| REMS special saw blade 2"/140-2,5<br>steel pipes ≤ 2" | 2"/140                 | 2,5               | HSS-Bi    | corrugated | yellow | 5                  | 561007   | 41.90           | <b>32.90</b>         |
| REMS special saw blade 2"/140-3,2<br>steel pipes ≤ 2" | 2"/140                 | 3,2               | HSS-Bi    | corrugated | yellow | 5                  | 561001   | 39.90           | <b>31.90</b>         |
| REMS special saw blade 4"/200-3,2<br>steel pipes ≤ 4" | 4"/200                 | 3,2               | HSS-Bi    | corrugated | yellow | 5                  | 561002   | 52.90           | <b>40.90</b>         |

For materials that are difficult to cut, e.g. stainless steel pipes, hard cast iron pipes, instead of the REMS special saw blade the fine-toothed REMS universal saw blade in connection with REMS Tiger ANC SR with electronic stroke number regulation. \*HSS-Bi: bimetal high speed steel

## REMS universal saw blades

→ REMS Tiger, REMS Cat, REMS Akku-Cat, etc.



REMS

| Designation   | Length<br>mm | Tooth pitch<br>mm | Material*          | Teeth        | Colour | Quantity<br>pieces | Art. No. | List<br>price € | Promotion<br>price € |
|---|--------------|-------------------|--------------------|--------------|--------|--------------------|----------|-----------------|----------------------|
| REMS universal saw blade 100-1,8/2,5<br>for all sawing work | 100          | Combo<br>1,8/2,5  | HSS-Bi<br>flexible | straight-set | red    | 5                  | 561006   | 26.30           | <b>20.90</b>         |
| REMS universal saw blade 150-1,8/2,5<br>for all sawing work | 150          | Combo<br>1,8/2,5  | HSS-Bi<br>flexible | straight-set | red    | 5                  | 561005   | 37.40           | <b>29.50</b>         |
| REMS universal saw blade 200-1,8/2,5<br>for all sawing work | 200          | Combo<br>1,8/2,5  | HSS-Bi<br>flexible | straight-set | red    | 5                  | 561003   | 49.90           | <b>39.00</b>         |
| REMS universal saw blade 300-1,8/2,5<br>for all sawing work | 300          | Combo<br>1,8/2,5  | HSS-Bi<br>flexible | straight-set | red    | 5                  | 561004   | 73.50           | <b>56.90</b>         |

Also for wood with nails, pallets. For materials that are difficult to cut, e.g. stainless steel, hard cast iron, a low stroke number is necessary, e.g. by REMS Tiger ANC SR with electronic stroke number regulation. \*HSS-Bi: bimetal high speed steel

## REMS Push – reliably tight.

Brass pressure piston



Tank volume 12 l  
up to 60 bar



Stainless steel tank

### REMS Push

Manual pressure testing pump with pressure gauge,  $p \leq 6 \text{ MPa}/60 \text{ bar}/870 \text{ psi}$ , for pressure and leak testing of pipe systems and tanks up to  $6 \text{ MPa}/60 \text{ bar}/870 \text{ psi}$ . Corrosion-resistant, powder-coated sheet steel tank for 12 l. 1.5 m high-pressure hose with  $\frac{1}{2}$ " connection. In a box. Art. No. 115000 ~~179.00~~

€ **155.00**

### REMS Push INOX

Manual pressure testing pump with pressure gauge,  $p \leq 6 \text{ MPa}/60 \text{ bar}/870 \text{ psi}$ , for pressure and leak testing of pipe systems and tanks up to  $6 \text{ MPa}/60 \text{ bar}/870 \text{ psi}$ . Stainless steel tank for 12 l. 1.5 m high-pressure hose with  $\frac{1}{2}$ " connection. In a box. Art. No. 115001 ~~259.00~~

€ **205.00**

Up to  $6 \text{ MPa}/60 \text{ bar}/870 \text{ psi}$ .

Self-priming.



## REMS E-Push – electrical filling and testing.

High-pressure hose with fabric inlay  
prevents falsification of the measuring result

Suction hose with suction filter

High-power piston pump

High displacement of 7 l/min

### REMS E-Push

Electric pressure testing pump with pressure gauge,  $p \leq 6 \text{ MPa}/60 \text{ bar}/870 \text{ psi}$ , for pressure and leak testing of pipe systems and tanks up to  $6 \text{ MPa}/60 \text{ bar}/870 \text{ psi}$ . Pump unit with 110 V, 50 Hz, 1750 W condenser motor. 1.5 m suction hose with  $\frac{1}{2}$ " connection. 1.5 m high-pressure hose with  $\frac{1}{2}$ " connection. In a box. Art. No. 115100 ~~679.00~~

€ **459.00**

**REMS Solar-Push – filling, flushing and venting in one action. Self priming. High displacement. Ideal for solar power systems, ground heat systems and underfloor heating.**



Easy cleaning and simple filling thanks to large opening in the plastic container.

Two practical handles for easy carrying of the plastic container.



German quality product



**REMS Solar-Push K 60**

Electric filling and flushing unit for fast, easy filling, flushing and venting of closed systems. Transport volume  $\leq 50$  l/min, tank volume 30 l. With centrifugal pump, temperature-resistant for continuous load  $\leq 60^\circ\text{C}$ . Transport pressure  $\leq 0.55$  MPa/5.5 bar/80 psi. Condenser motor 230 V / 110 V, 50 Hz, 860 W. 2 pieces flexible, transparent PVC fabric hoses  $\frac{1}{2}$ " T60, each 3 m long, temperature-resistant  $\leq 60^\circ\text{C}$ . In box.

Art. No. 115312 ~~559.00~~

€ **439.00**

**REMS Solar-Push I 80**

Electric filling and flushing unit for easy and fast filling, flushing and venting of closed systems. Pumping capacity  $\leq 27$  litres/min, tank volume 30 litres. With impeller pump, temperature resistant during constant use  $\leq 80^\circ\text{C}$ . Pumping pressure  $\leq 0.65$  MPa/6.5 bar/94 psi. Capacitor motor 230 V, 50 Hz, 1000 W. Pressure release valve. 2 flexible EPDM-fabric hoses  $\frac{1}{2}$ " T100, 3 m long, high temperature resistant  $\leq 100^\circ\text{C}$ . In carton.

Art. No. 115311 ~~659.00~~

€ **499.00**



**Fine filter with fine filter bag 70  $\mu\text{m}$**

consisting of screw cap with return connection for return line with  $\frac{3}{4}$ " union, adapter, 1 fine filter bag 70  $\mu\text{m}$ , for flushing underfloor heating/wall radiators and clearing sludge

Art. No. 115220

€ **36.20**

**Fine filter with fine filter cartridge 50  $\mu\text{m}$**

washable, with large dirt collection vessel, for return line with  $\frac{3}{4}$ " union, for flushing underfloor heating/wall radiators and clearing sludge

Art. No. 115323

€ **134.60**

**Changeover valve flow direction**

complete with EPDM fabric hose  $\frac{1}{2}$ " T100, for flushing underfloor heating/ wall radiators and effective clearance of sludge by pressure surges when flow direction changes

Art. No. 115326

€ **179.00**

**REMS Pull-Push – fast removal of blockages.**

High downforce thanks to front adjustable grip handle.

2 adaptor sleeves for optimum adaptation to the problem area:

Short sleeve for sinks, basins and baths, long sleeve for toilets.



**REMS Pull-Push**

Manual suction / pressure pump for fast removal of blockages.

With short and long sleeves. In carton.

Art. No. 170300 ~~109.00~~

€ **79.00**

## Cutting and deburring up to DN 100.



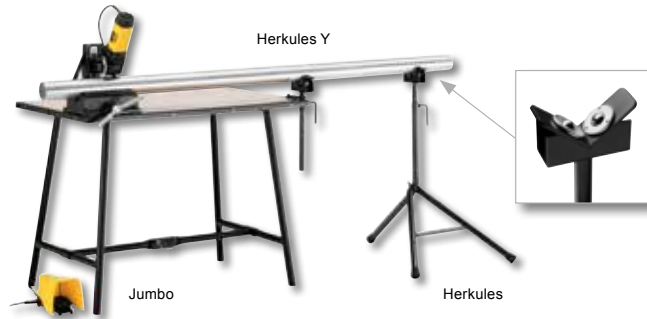
1200 W  
Only 17 kg

German  
quality product



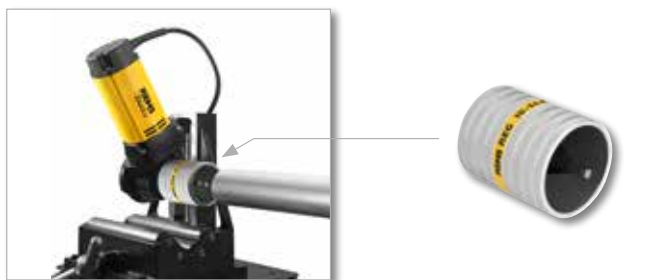
Untergestell

Herkules



Jumbo

Herkules



## REMS Cento – cutting up to DN 100. Right-angled. Chipless. Without outer burr. Dry. Ultra-fast, e.g. INOX Ø 54 mm in only 4 seconds.

Pipes of the press fitting systems made of stainless steel, carbon steel, copper, Ø (8)22–108 mm. Steel pipes EN 10225 (DIN 2440) DN (10) 20–100, Ø (1/4) 3/4–4". Cast pipes (SML) DN 50–100. Plastic tubes, multilayer composite tubes Ø (10)25–110 mm, s ≤ 10 mm.

### Unique! Patent DE 10 2005 053 179

Driven cutting wheel and straight in-feed for fast cutting

### REMS Cento

Pipe cutting machine for fast, right angled cutting of pipes Ø (8)22–108 mm, without outer burr. For pipes of the press fitting systems of stainless steel, carbon steel, copper. For steel pipes, plastic tubes, multilayer composite tubes, cast pipes (SML). With maintenance-free gear, proven 110 V, 50–60 Hz, 1200 W universal motor. Speed 115 rpm. Rollers made of hardened precision steel. Safety foot switch. Ring spanner. Without cutting wheel.

Art. No. 845001 ~~959.00~~



**REMS cutting wheel Cu-INOX free!**

Value € 63.90

Art. No. 845X02 € **869.00**

### REMS cutting wheel Cu-INOX

for pipes of press fitting systems made of stainless steel, copper, carbon steel

Art. No. 845050

€ **63.90** /piece

### REMS cutting wheel Cu

especially for pipes of the press fitting systems made of copper

Art. No. 845053

€ **63.90** /piece

### REMS cutting wheel St

for steel pipes, cast pipes (SML)

Art. No. 845052

€ **63.90** /piece

### REMS cutting wheel V

for plastic and multilayer composite tubes, wall thickness s ≤ 10 mm

Art. No. 845051

€ **63.90** /piece

### REMS cutting wheel C-SF

for cutting carbon steel pipes and simultaneously producing a welding chamfer

Art. No. 845055 ~~85.50~~

€ **79.00** /piece

### Cento Accessory Pack 1

consisting of stand and REMS Herkules

Art. No. 120X01 ~~341.00~~

€ **269.00**

### Cento Accessory Pack 2

consisting of Jumbo, Herkules and Herkules Y

Art. No. 120X02 ~~590.00~~

€ **459.00**

## Inside pipe deburring device up to DN 100 – ideal for pipes of the pressfitting systems etc.

### REMS REG 28–108

Inside pipe deburring device for pipes of Ø 28–108 mm, Ø 3/4–4".

For electric drive by the REMS Cento pipe cutting machine.

Art. No. 113840 ~~245.30~~

€ **169.00**

Protected by a German utility model registration!

Patent EP pending!

### REMS REG 10–54 E – also for electric drive

Outer/inner pipe burr remover for pipes Ø 10–54 mm, 1/2–2 1/4". Also for electric drive by REMS Helix (see page 7) and other power drills/screwdrivers (speed ≤ 300 rpm), by the pipe cutting machine REMS Cento (from date of manufacture 09/2011) or by the pipe circular sawing machine REMS Turbo Cu-INOX (from date of manufacture 09/2011).

Art. No. 113835 ~~85.50~~

€ **69.00**



Only 2.1 kg

German quality product

**REMS Akku-Nano – cutting up to DN 40.**  
Ultra-light. Fast. Right-angled. Chipless.  
No outside burr. Dry.

**REMS Akku-Nano Basic-Pack**

Cordless pipe cutting machine for fast, right angled cutting of pipes Ø 10–40 mm, without outer burr. For pipes of the press fitting systems made of stainless steel, carbon steel, Ø 12–28 mm, copper Ø 10–35 mm. Multilayer composite tubes Ø 10–40 mm. With maintenance-free gear, powerful 10.8 V, 270 W battery motor. Speed 130 rpm. Safety switch. Li-Ion 10.8 V, 1.3 Ah battery, Li-Ion 110 V, 50–60 Hz rapid charger, 65 W. Back pressure rollers of hardened precision steel. Single open ended wrench size 8. Without cutting wheel. In carrying bag. Art. No. 844011 469.00

€ **339.<sup>00</sup>**

**REMS cutting wheel Cu-INOX**

for pipes of press fitting systems made of:  
stainless steel, carbon steel, copper Art. No. 844050

€ **21.<sup>60</sup>** /piece

**REMS cutting wheel V**

for multilayer composite tubes Art. No. 844051

€ **21.<sup>60</sup>** /piece



German quality product

Only 1.9 kg

**REMS Nano – cutting up to DN 40.**  
Ultra-light. Fast. Right-angled. Chipless.  
No outside burr. Dry.

**REMS Nano Basic-Pack**

Electric pipe cutting machine for fast, right angled cutting of pipes Ø 10–40 mm, without outer burr. For pipes of the press fitting systems made of stainless steel, carbon steel, Ø 12–28 mm, copper Ø 10–35 mm. Multilayer composite tubes Ø 10–40 mm. With maintenance-free gear, proven 110 V, 50–60 Hz, 130 W DC motor. Speed 130 rpm. Back pressure rollers made of hardened precision steel. Safety switch. Single open ended wrench size 8. Without cutting wheel. In carrying bag. Art. No. 844010 339.00

€ **269.<sup>00</sup>**

**REMS cutting wheel Cu-INOX**

for pipes of press fitting systems made of:  
stainless steel, carbon steel, copper Art. No. 844050

€ **21.<sup>60</sup>** /piece

**REMS cutting wheel V**

for multilayer composite tubes Art. No. 844051

€ **21.<sup>60</sup>** /piece

**REMS REG – Robust quality tool**  
for removing outer and inner burr from pipes.



**For stainless steel pipes, other steel pipes,  
copper, brass, aluminium and plastic pipes.**

**REMS REG 8–35**

Outer/inner pipe burr remover for pipes Ø 8–35 mm, ½–1 ¼".  
Art. No. 113825 49.00

€ **32.<sup>00</sup>**

**REMS REG 10–54**

Outer/inner pipe burr remover for pipes Ø 10–54 mm, ½–2 ¼".  
Art. No. 113830 47.00

€ **39.<sup>00</sup>**

Protected by a German utility model registration!

**REMS REG 10–54 E – also for electric drive**

Outer/inner pipe burr remover for pipes Ø 10–54 mm, ½–2 ¼". Also for electric drive by REMS Helix (see page 7) and other power drills/screwdrivers (speed ≤ 300 rpm), by the pipe cutting machine REMS Cento (from date of manufacture 09/2011) or by the pipe circular sawing machine REMS Turbo Cu-INOX (from date of manufacture 09/2011).  
Art. No. 113835 85.00

€ **69.<sup>00</sup>**

**REMS RAS Cu-INOX – highly resistant pipe cutter for cutting pipes made of stainless steel, carbon steel, copper etc.**

Robust, sturdy structure for harsh conditions. Very stable spindle, long spindle guide and specially hardened back pressure rollers. Exact guiding on the pipe, easy engagement, easy cutting and accurate, right-angled cut as a result.

**International Design Award**



**REMS RAS Cu-INOX 6-42**  
Pipe cutter for pipes Ø 6-42, ¼-1½".  
Art. No. 113380 100-60

€ **85.00**

German quality product



**REMS RAS Cu-INOX 3-35**  
Pipe cutter for pipes Ø 3-35 mm, ¼-1¼", with integrated pipe burr remover.  
Art. No. 113350 37-40

€ **29.00**



**REMS RAS Cu-INOX 6-64**  
Pipe cutter for pipes Ø 6-64, ¼-2½".  
Art. No. 113400 118-40

€ **95.00**



**REMS RAS Cu-INOX 3-42**  
Pipe cutter for pipes Ø 3-42 mm, ¼-1¼", with integrated pipe burr remover.  
Art. No. 113330 48-40

€ **35.00**

**REMS RAS Cu – highly resistant pipe cutter especially for cutting copper pipes**

Very stable spindle, long spindle guide and specially hardened back pressure rollers. Exact guiding on the pipe, easy engagement, easy cutting and accurate, right-angled cut as a result.

**International Design Award**

Quick adjustment of the engagement spindle in both directions.



**REMS RAS Cu 8-42**  
Pipe cutter for pipes Ø 8-42, ¼-1¾".  
Art. No. 113370 89-60

€ **75.00**

German quality product



**REMS RAS Cu 3-35**  
Pipe cutter for pipes Ø 3-35 mm, ¼-1¼", with integrated pipe burr remover.  
Art. No. 113340 34-60

€ **27.00**



**REMS RAS Cu 8-64**  
Pipe cutter for pipes Ø 8-64, ¼-2½".  
Art. No. 113410 108-10

€ **85.00**



**REMS RAS Cu 3-42**  
Pipe cutter for pipes Ø 3-42 mm, ¼-1¼", with integrated pipe burr remover.  
Art. No. 113320 44-60

€ **33.00**

**REMS RAS P – highly resistant pipe cutter for cutting plastic and multilayer composite tubes.**

Very stable spindle, long spindle guide and specially hardened back pressure rollers. Exact guiding on the pipe, easy engagement, easy cutting and accurate, right-angled cut as a result. **Quick adjustment of the engagement spindle in both directions.**

**International Design Award**

German quality product



**REMS RAS P 10-40**  
Pipe cutter for pipes Ø 10-40 mm, ½-1¾".  
Art. No. 290050 99-50

€ **73.00**

German quality product



**REMS RAS P 50-110**  
Pipe cutter for pipes Ø 50-110.2-4"  
Art. No. 290100 146-50

€ **115.00**

German quality product



**REMS RAS P 10-63**  
Pipe cutter for pipes Ø 10-63, ½-2"  
Art. No. 290000 99-60

€ **79.00**



**REMS RAS P 110-160**  
Pipe cutter for pipes Ø 110-160, 4-6".  
Art. No. 290200 179-60

€ **145.00**

Up to 200 cut sections per battery charge!



Only 1.2 kg!

Wedge-shaped blade for universal cutting of plastic and multilayer composite tubes



**REMS Akku-ROS P 40 – fast, easy cutting of pipes. Powerful, e.g. Ø 20 mm multilayer composite tubes in only 4 s.**

**REMS Akku-ROS P 40 Set**

Cordless pipe shears for fast, easy cutting of plastic and multilayer composite tubes Ø ≤ 40 mm, Ø ≤ 1%, s ≤ 6.7 mm. Electrical drive with powerful 9.6 V, 70 W battery motor, maintenance-free gear, safety switch, on/off switch. NiMH 9.6 V, 1.0 Ah battery, NiMH 100–240 V, 50–60 Hz, 6 W battery charger. With wedge-shaped blade. In a box.  
Art. No. 291310 ~~99.00~~

€ **59.<sup>00</sup>**

**REMS ROS P 26 – fast cutting in one cut.**



Robust quality tool for clean, fast cutting of pipes. Stable magnesium version. For one-hand operation.



**REMS ROS P 26**

Fast cutting in one cut. Pipe shears for one-hand operation. For pipes Ø ≤ 26 mm, 1".  
Art. No. 291240 ~~35.90~~

€ **29.<sup>00</sup>**

**Rugged quality tools for tough use and long service life.**



**REMS Catch S 1" + S 1 1/2" + W 240**

Swedish pattern wrench 'S'. DIN 5234 – Form C. Water pump pliers, 7 grip positions. ISO 8976.  
Art. No. 116X01 ~~94.10~~

Package price € **55.<sup>00</sup>**

**Rugged design in chrome-vanadium steel, all steel, drop forged, tempered, powder-coated. Hardened, highly wear resistant toothting.**



**REMS Catch S 1" + S 1 1/2" + S 2"**

Swedish pattern wrench 'S'. DIN 5234 – Form C.  
Art. No. 116X02 ~~135.30~~

Package price € **82.<sup>00</sup>**

With automatic spiral feed and return



0–550 rpm  
600 W, only 5.2 kg

### REMS Mini-Cobra A

Electric pipe cleaning device with automatic spiral feed and return, for pipes Ø 20–50 (75) mm. For pipe cleaning spirals Ø 8 and 10 mm. Drive machine with maintenance-free gear, 230 V, 50–60 Hz, 600 W universal motor, extra torque powerful left and right-hand rotation at low speeds, safety switch. Stepless, electronic speed control (accelerator switch). Spiral drum made of impact-resistant, glass fibre-reinforced plastic. Spiral with core 8 × 7.5 m. In box. Art. No. 170020 ~~467.00~~

German quality product

€ **369.<sup>00</sup>**

Proven, handy device for quick action in case of blocked pipes in the kitchen, bathroom and toilet.



German quality product

### REMS Mini-Cobra

Pipe cleaning device for pipes Ø 20–50 (75) mm, with crank handle and hexagonal driver for conventional drive machine (electric, slow drilling machine with continuous drive or power drill/screwdriver). For pipe cleaning spirals Ø 6, 8 and 10 mm. Spiral drum made of impact-resistant, glass fibre-reinforced plastic. Quick-clamping chuck. Spiral 8 × 7.5 m. In box. Art. No. 170010 ~~125.00~~

€ **99.<sup>00</sup>**

German quality product



### REMS Cobra – Pipe free – quick and easy.

Fast rotator with spiral sections for working lengths up to 70 m. Effective chain spinning and cutting up to 740 rpm.

Closed drive spindle protects motor and drive against dirt and water.

### REMS Cobra 22 Set 16 + 22

Electric pipe cleaning machine for pipes Ø 20–150 mm. Drive machine with maintenance-free toothed belt drive, 230 V, 50 Hz, 750 W condenser motor, right and left-hand rotation, guide hose. 5 spiral sections 16 × 2.3 m in the spiral cage, straight drill 16, club drill 16, toothed blade drill 16/25, spiral cutting pin 16, 5 spiral sections 22 × 4.5 m in the spiral cage, straight drill 22, recovery drill 22, funnel drill 22, toothed cross blade drill 22/35, spiral cutting pin 22, 2 pairs of guide gloves, steel case for every tool kit. Art. No. 172012 ~~1,649.00~~

€ **1,099.<sup>00</sup>**

up to  
**2"**



High cooling performance, e.g. 3/4" steel pipe in just 9 min\*.

German quality product

### REMS Frigo 2 – electrically freeze instead of emptying. Ultra-fast up to 2".

#### Unique! Patent EP 1 108 944

One-piece freezing heads for the main working range Ø 1/4 – 1" or Ø 15 – 35 mm, no reducer inserts required. Very compact freezing heads with specially geometrically designed recesses for holding the respective different pipe diameters. Very narrow, only 50 mm wide. Can be used everywhere, even in narrow places. No pastes/greases required.

German quality product

### REMS Frigo 2

Electrical pipe freezing device with closed coolant circuit. For steel, copper, plastic, multilayer composite pipes, Ø 1/2–2", Ø 10–60 mm. Cooling unit 110 V, 50 Hz, 430 W, 2 coolant hoses, 2 clamping straps, spray bottle. Equipment for Ø 1/4–1/4", 15–42 mm. In sturdy steel housing. Art. No. 131011 ~~1,139.00~~

€ **879.<sup>00</sup>**



### Upgrade kit 1 1/2–2" / 54–60 mm

Art. No. 131160

€ **195.<sup>00</sup>**

\*ambient/water temperature approx. 18°C.



German quality product

Tripod (accessory)

## REMS Python – save expensive fittings. Super easy bending up to Ø 2", Ø 63 mm.

### REMS Python

Hydraulic pipe bender for dimensionally accurate bending of pipes up to 90°. Steel pipes EN 10225 Ø ½–2", multilayer composite tubes Ø 32–63 mm. Bender drive with back former supports and back formers, bending formers St and V. In sturdy transport case.

#### Set St ¾ - ½ - ¾ - 1 - 1¼"

for steel pipes  
Art. No. 590020 ~~999,00~~

€ **899.<sup>00</sup>**

#### Set St ½ - ¾ - 1 - 1¼ - 1½ - 2"

for steel pipes  
Art. No. 590021 ~~1,099,00~~

€ **989.<sup>00</sup>**

#### Set V 40 - 50 - 63 mm

for multilayer composite tubes  
Art. No. 590022 ~~1,179,00~~

€ **1,025.<sup>00</sup>**

**Tripod** Art. No. 590150

€ **103.<sup>00</sup>**

## REMS Curvo – Bending pipes without creasing up to Ø 40 mm, 180°. Without vice. Ready to use immediately without setting.



1000 W – only 8 kg

German quality product

Bending instead of expensive fittings!  
The cost of REMS Curvo is recovered just after a few bends.

### REMS Curvo Basic-Pack

Electric pipe bender Ø 10–40 mm, Ø ¼–1½", up to 180°. Hard, semi-hard, soft copper pipes, also thin-walled, Ø 10–35 mm, Ø ¾–1½", soft jacketed copper pipes, also thin-walled, Ø 10–18 mm, pipes of the press fitting systems made of stainless steel Ø 12–28 mm, carbon steel, also jacketed, Ø 12–28 mm, soft precision steel pipes Ø 10–28 mm, steel pipes DIN EN 10255 Ø ¼–¾", electrical installation pipes EN 50086 Ø 16–32 mm, multilayer composite tubes Ø 14–40 mm, among other things drive machine with maintenance-free gear with safety slip clutch, 110 V, 50–60 Hz, 1000 W universal motor, continuous, electronic safety switch, right and left-hand rotation. Fast and creep speed for precise bending. Insert bolt. Bending and back formers. In sturdy steel case.

Art. No. 580010 ~~929,00~~

€ **719.<sup>00</sup>**

## REMS Curvo 50 – wrinkle free bending of large pipes.



### REMS Curvo 50 Basic-Pack

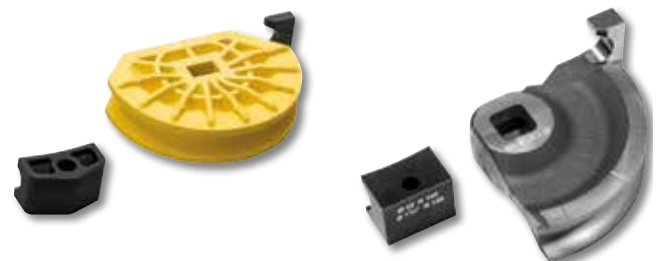
Electric pipe and tube bender Ø 10 – 50 mm, up to 90°. Steel pipes EN 10225 Ø ¼ – 1¼", hard, half-hard and soft copper tubes, Ø 10 – 42 mm, thin-wall copper tubes Ø 10 – 35 mm, pipes of the press fitting systems made of stainless steel Ø 12 – 42 mm, carbon steel Ø 12 – 35 mm, carbon steel coated Ø 12 – 28 mm, multi-layer composite tubes Ø 14 – 50 mm and others. In sturdy steel case.

Art. No. 580010 ~~2,269,00~~

€ **1,799.<sup>00</sup>**

## Bending formers and back formers

Bending formers and back formers, 180°, form and pressure resistant, in highstrength, high-slide, glass-fibre reinforced polyamide 90° (Ø 35 R 100, Ø 42 R 140, Ø 50 R 135, Ø 1" R 100, Ø 1¼" R 140). Optimum mating of bending formers and back formers ensures sliding appropriate to the material without cracks and wrinkles. Angle scale provided on each bending former and mark on the back former ensure precise bending. Rapid change of bending formers and back formers.



List price **– 20 %**

# REMS TECHNOLOGY LI-ION PLUS



**New**

- Li-Ion 14.4 V battery with 1.6 or 3.2 Ah capacity for long service life.
- For over 300 pressing operations per battery charge on DN 15<sup>2)</sup>.
- Withstands very high stress.
- Low weight.
- Extended operating temperature range –10 to +60 °C.
- Total discharge and overload protection with single cell monitoring.
- Temperature monitoring during the charging process.
- Short charging times.

**REMS Mini-Press ACC – The real one-hand radial press!**  
**Only 2.4 kg! Universal up to Ø 40 mm. Ultra-light.**  
**Ultra-small. Ultra-handly. Ultra-fast. 360° rotatable.**



Extremely "mini"  
 < 34 cm

Due to the length of less than 34 cm, pressing is possible in particularly narrow places.

Very compact design and low weight of the REMS Mini pressing tongs due to special arrangement of the pressing tongs connection (Patent EP 1 952 948).

Extended pressing range!



**36**  
 MONTHS  
 WARRANTY!

Charging status indicator



**←ACC→**  
 Automatic Circuit Control  
 with automatic retraction

German quality product



## REMS Mini-Press ACC Li-Ion Basic-Pack

Cordless radial press with automatic return after completed pressing cycle (forced process), for producing press connections Ø 10–40 mm. For driving REMS Mini pressing tongs Rotating pressing tongs seat with automatic locking. Electro-hydraulic drive with powerful 14.4 V, 420 W battery motor, robust planetary gear, eccentric reciprocating pump and compact high power hydraulic system, safety switch Li-Ion 14.4 V, 1.6 Ah battery, Li-Ion/Ni-Cd 230 V, 50–60 Hz, 65 W rapid charger. In sturdy steel case.

Art. No. 578012 1,069.00

+ gift package with a value of € 339.20



REMS Mini-Press ACC Li-Ion Basic-Pack;  
 1 REMS Helix VE Li-Ion Set; 1 bit set  
 Value € 1,408.20



Art. No. 578X03

€ **969.00**



←ACC→

Automatic Circuit Control  
with automatic retraction

German quality product

REMS TECHNOLOGY  
Li-Ion PLUS



Only 4.3 kg

36  
MONTHS  
WARRANTY!<sup>1)</sup>

Charging status indicator



Universal. Compact. Handy. Ultra-fast.  
360° rotatable.

### REMS Akku-Press Li-Ion Basic-Pack

Cordless radial press with switch-off signal after completed pressing cycle, for producing press connections Ø 10–108 mm. Li-Ion 14.4 V, 3.2 Ah battery, Li-Ion/Ni-Cd 110 V, 50–60 Hz, 65 W rapid charger. In sturdy steel case.

Art. No. 571013 ~~1,069.00~~

Art. No. 571X01

€ **939.00**

### REMS Akku-Press ACC Li-Ion Basic-Pack

Cordless radial press with automatic return after completed pressing cycle (forced process), for producing press connections Ø 10–108 mm. See above for rest of delivery scope.

Art. No. 571014 ~~1,229.00~~

Art. No. 571X02

€ **999.00**



+ Gift package with every Basic-Pack:  
1 cordless LED lamp Li-Ion  
extra Li-Ion 14.4 V, 3.2 Ah battery  
Value € 188.90

←ACC→

Automatic Circuit Control  
with automatic retraction

German quality product



Only 4.7 kg

36  
MONTHS  
WARRANTY!<sup>1)</sup>

Universal. Compact. Handy. Ultra-fast.  
360° rotatable.

### REMS Power-Press Basic-Pack

Electro-hydraulic radial press with switch-off signal after completed pressing cycle, for producing press connections Ø 10–108 mm. For driving REMS pressing tongs/pressing rings and other suitable makes of pressing tongs/pressing chains. Rotating pressing tongs seat with automatic locking. Electro-hydraulic drive with proven 110 V, 50–60 Hz, 450 W universal motor, robust planetary gear, eccentric reciprocating pump and compact high performance hydraulic system, safety switch. In sturdy steel case.

Art. No. 577011 ~~929.00~~

€ **849.00**

### REMS Power-Press ACC Basic-Pack

Electro-hydraulic radial press with automatic return after completed pressing cycle (forced process), for producing press connections Ø 10–108 mm.

See above for rest of delivery scope.

Art. No. 577010 ~~1,029.00~~

€ **889.00**

German quality product



Only 4.7 kg

36  
MONTHS  
WARRANTY!<sup>1)</sup>

REMS Power-Press E – the low cost  
radial press. Compact. Handy. Ultra-light.

### REMS Power-Press E Drive Unit

Electric radial press for production of press connections Ø 10–108 mm. For driving REMS pressing tongs/pressing rings. Pressing tongs seat with automatic locking. Electro-mechanical drive with proven 230 V, 50–60 Hz, 450 W universal motor, maintenance-free gear with safety slipping clutch and in-feed system with machine screw spindle, safety switch. In a box.

Art. No. 572100 ~~669.00~~

€ **559.00**

<sup>1)</sup> Prolongation of the Manufacturer's Warranty of the drive unit to 36 months by annual inspection at an authorised REMS service depot. No registration necessary.

Details: [www.rems.de](http://www.rems.de) → Downloads → Operating instructions → Select the operating instructions of the relevant drive unit → see "Prolongation of the Manufacturer's Warranty to 36 months".

**REMS Eco-Press – universal**  
**up to Ø 26 mm.**  
**Secure crimping in seconds.**

German quality product

**Patent EP 1 223 008**



only 1,6 kg

**REMS Eco-Press drive unit**

Manual radial press with final-lock-positioning for producing pressing joints of plastic and multi-layer composite tubes Ø 10 – 26 mm. For operating with REMS pressing tongs.

With dividable tubular arms. In skin package.

Art. No. 574000 123,00

€ **99.<sup>00</sup>**

**REMS pressing rings for large dimensions.**  
**Fit. Press. Finished.**

REMS pressing rings (PR-3S) with 3 swivellable pressing formers mounted on a jointed ring for large dimension complex pressings. Optimum pressing by radially controlled movement of the pressing formers. Pressing contour M for Geberit Mapress and other suitable systems.

|   |                        |                   |
|---|------------------------|-------------------|
| REMS pressing ring M 42 (PR-3S)   | Art. No. 572706        | 473.95            |
| REMS pressing ring M 54 (PR-3S)   | Art. No. 572708        | 473.95            |
| Intermediate tongs Z2<br>for driving REMS pressing rings (PR-3S) 42–54 mm | Art. No. 572795        | 99.95             |
| Steel case  | Art. No. 572810        | 63.00             |
| <b>Pressing ring set complete</b>   | <b>Art. No. 572060</b> | <b>€ 1,140.85</b> |



German quality product

only € **990.<sup>00</sup>**

**REMS pressing tongs – Proven a million times over.**  
**For all common press fitting systems.**

**Unique!**

**Patent EP 1 223 008**

All the REMS pressing tongs marked by \* in the catalogue have another connection and also fit the REMS Eco-Press manual radial press. Thus simple, inexpensive stocking.

German quality product



Highly resistant pressing tongs made of forged and specially hardened steel. The pressing contours of the REMS pressing tongs are system-specific and correspond to the pressing contours of the respective press fitting systems. Perfect system-conformant, reliable pressing as a result. Pressing jaws of the pressing tongs with high-precision cut and exactly rounded pressing contour on CNC machining centres. Much lower production tolerances than only cast pressing contour as a result.

**Traceability according to EN 1775:2007**

REMS pressing tongs/pressing rings with pressing contour M, V, SA, B, HR and UP have worked a specific marking into the pressing contour which leaves a lasting impression on the pressed fitting after the pressing process. This enables the user to check again whether the most suitable pressing tongs or the suitable pressing ring have been used to make the pressfit connection even after the pressing process.

With this traceability REMS fulfils the recommendations of the European standard EN 1775:2007 for the installation of pressfitting systems for gas.



Example REMS pressing tongs M: Impression "M" on pressed fitting for traceability according to EN 1775:2007

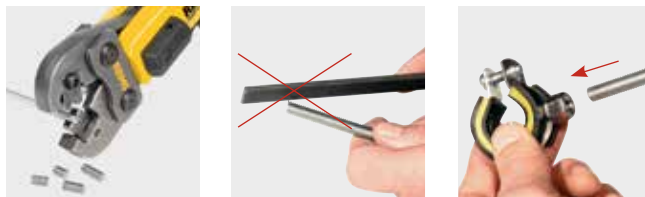
**REMS pressing tongs / pressing tongs Mini**  
**M, V up to 35 mm**

each € **94.<sup>00</sup>**

**Other REMS pressing tongs / pressing tongs Mini**  
**up to 35 mm**

e.g. F, G, RN, TH, U, UP, VP

each € **105.<sup>00</sup>**



Cropping tongs with reversible cutting inserts for steel, stainless steel, M 6–M 12, up to strength class 4.8 (400 N/mm<sup>2</sup>).



German quality product

Patent EP 1 952 948

**REMS cropping tongs M – cutting threaded bars. Ultra-fast.**

**Unique! – Patent EP 1 223 008**

All cropping tongs marked by \* have another connection for manual drive by the manual radial press REMS Eco-Press. Thus simple, inexpensive stocking.

For REMS Mini-Press ACC:

**REMS Mini cropping tongs – cuts in just 2 seconds!**

|      |                 |                              |
|------|-----------------|------------------------------|
| M 6  | Art. No. 578620 |                              |
| M 8  | Art. No. 578621 |                              |
| M 10 | Art. No. 578622 | instead of € 153,90 now only |

For REMS radial presses (except REMS Mini-Press ACC) and suitable radial presses of other makes:

**REMS cropping tongs**

|      |                 |                              |
|------|-----------------|------------------------------|
| M 6* | Art. No. 571890 |                              |
| M 8* | Art. No. 571895 |                              |
| M 10 | Art. No. 571865 |                              |
| M 12 | Art. No. 571870 | instead of € 153,90 now only |

€ **129.<sup>00</sup>**/piece



Can be washed out with water, tested by experts.

### REMS Spezial – high alloy thread cutting oil

High alloy mineral oil-based thread cutting oil. Developed especially for cutting threads. Very high lubricating and cooling effect. Absolutely essential for clean threads and long life of dies, tools and machines.

|                     |                 |                  |                           |
|---------------------|-----------------|------------------|---------------------------|
| <b>Spray 600 ml</b> | Art. No. 140105 | <del>14.40</del> | € <b>9.<sup>95</sup></b>  |
| <b>Canister 5 l</b> | Art. No. 140100 | <del>44.00</del> | € <b>31.<sup>00</sup></b> |

German quality product



W 1.303



DW-0201AS2032



7808-649

**Completely soluble in water.** For drinking water pipes etc. According to DVGW, ÖVGW, SVGW regulations.

### REMS Sanitol – mineral oil-free thread cutting oil

Synthetic, mineral oil-free thread cutting oil. Dyed red for checking washout. Excellent corrosion protection. Water-free. Developed especially for drinking water pipes, but also excellently suitable for universal thread cutting. Very high lubricating and cooling effect. Absolutely essential for clean threads and long life of dies, tools and machines.

|                     |                 |                  |                           |
|---------------------|-----------------|------------------|---------------------------|
| <b>Spray 600 ml</b> | Art. No. 140115 | <del>15.60</del> | € <b>11.<sup>90</sup></b> |
| <b>Canister 5 l</b> | Art. No. 140110 | <del>59.90</del> | € <b>43.<sup>90</sup></b> |

## REMS eva – the die stock for professionals.

Very easy starting and thread cutting by precision processing of the die head, dies and cover in a compact unit. Ratchet lever of steel, thick plastic jacket.



German quality product



### REMS eva Set R 1/2-3/4-1-1 1/4

Manual die stock with quick-change die heads. For pipe threads 1/2–2", 16–50 mm, bolt threads 6–30 mm, 1/4–1". For right and left-hand threads. 1 ratchet lever for the entire cutting range. Quick-change die heads R 1/2-3/4-1-1 1/4 with dies for conical pipe threads ISO 7-1, EN 10226 (DIN 2999, BSPT) R right-hand. In sturdy steel case.

Art. No. 520015 ~~299.00~~

€ **249.<sup>00</sup>**

### REMS eva Set R 1/2-3/4-1-1 1/4-1 1/2-2

Manual die stock with quick-change die heads R 1/2-3/4-1-1 1/4-1 1/2-2. In sturdy steel case.

Art. No. 520017 ~~466.00~~

€ **359.<sup>00</sup>**

## REMS Amigo E – the lightest, strongest and fastest up to 1".



950 W  
only 3.4 kg



### REMS Amigo E Set M 20-25-32

Electric die stock with quick-change die heads. For pipe threads 1/2–1", 16–32 mm, for right and left-hand threads. Drive machine with maintenance-free gear, powerful 110 W, 50–60 Hz, 950 W universal motor, safety switch, power boosting automatic carbon brush adjustment in the direction of rotation selection. Peak consumption up to 1500 W. Right and left-hand rotation. Support bracket for both directions of rotation. REMS eva quick-change die heads for threads for electrical installation pipes DIN EN 60423 M. In sturdy steel case.

Art. No. 530014 ~~589.00~~

€ **399.<sup>00</sup>**

German quality product

**REMS Amigo – The smallest, lightest, strongest and fastest up to 1¼”.**



1200 W  
Only 3.5 kg

German quality product



### REMS Amigo Set M 16-20-25-32

Electric die stock with quick-change die heads. For pipe threads ¼–1¼”, 16–40 mm, bolt threads 6–30 mm, ¼–1”. For right and left-hand threads. Drive machine with maintenance-free gear, powerful universal motor 110 V, 50–60 Hz, 1200 W, safety switch, power boosting automatic carbon brush adjustment in the direction of rotation selection. Peak consumption up to 1800 W. Right and left-hand rotation, overload protection. Support bracket for both directions of rotation. REMS eva quick-change die heads for threads for electrical installation pipes DIN EN 60423 M. In sturdy steel case.  
Art. No. 530022 ~~749,00~~

€ **529.<sup>00</sup>**

**REMS Amigo 2 – extremely strong up to 2”.**



1700 W  
Only 6.5 kg

German quality product



### REMS Amigo 2 Set R ½-¾-1-1¼-1½-2

Electric die stock with quick-change die heads. For pipe threads ¼–2”, 16–50 mm, bolt threads 6–30 mm, ¼–1”. For right and left-hand threads. Drive machine with maintenance-free gear, powerful 110 V, 50–60 Hz, 1700 W universal motor, safety switch, power boosting automatic carbon brush adjustment in the direction of rotation selection, right and left-hand rotation. Support bracket for both directions of rotation. REMS eva quick-change die heads for conical pipe threads ISO 7-1, EN 10226 (DIN 2999, BSPT) R ½-¾-1-1¼-1½-2 right. In sturdy steel case.  
Art. No. 540020 ~~1,099,00~~

€ **809.<sup>00</sup>**

German quality product



### REMS Tornado – a class on its own.

Automatic clamping chuck  
Universal automatic die head  
Automatic lubrication cooling

### REMS Tornado 2000

Threading machine for pipe threads (1/16) ½–2”, 16–63 mm, bolt threads (6) 10–60 mm, ¼–2”. With maintenance-free gear, safety foot switch with emergency stop, 2 automatic clamping chucks, automatic lubrication cooling. With tool set, consisting of a universal automatic die head for all threads, including long threads, automatically opening, with automatic thread length for conical threads, dies for conical pipe thread, ISO 7-1, EN 10226 (DIN 2999, BSPT) R ½–¾ and R 1–2 right, pipe cutter, pipe inside burr remover, pressing lever. Height-adjustable material shelf. 110 V, 50–60 Hz, 1700 W universal motor. 53 rpm. Portable version on tripod, with large, removable oil basin and chip tray.

Art. No. 340200

€ 3,188.00

**+ 1 REMS Spezial oil 5 l**

Art.-No. 140100

€ 44.00

€ **3,232.00**

€ **2,049.<sup>00</sup>**

With universal automatic die head,  
automatically opening.

German quality product



**REMS Magnum – the compact one up to 2". Favourable dimensions, good weight. Excellent round and clean thread.**

**REMS Magnum 2000 L-T**

Threading machine for pipe threads ( $\frac{1}{16}$ ) $\frac{1}{4}$ –2", 16–63 mm, bolt threads (6)8–60 mm,  $\frac{1}{4}$ –2". With maintenance-free gear, safety foot switch with emergency stop, proven, self-reinforcing quick-clamping centring chuck, automatic lubrication cooling. With tool set, consisting of a universal automatic die head for all threads, including long threads, automatically opening, with automatic thread length for conical threads, dies for conical pipe thread ISO 7-1, EN 10226 (DIN 2999, BSPT) R  $\frac{1}{2}$ – $\frac{3}{4}$  and R 1–2 right, pipe cutter, pipe inside burr remover, pressing lever. Tool shelf. Lightweight version L-T with removable, large oil basin and chip tray. 110 V, 50–60 Hz, 1700 W universal motor. 53 rpm. For workbench, stand or wheel-stand with material support.

Art. No. 340226 € 3,364.00

**+ REMS wheel stand** Art.-No. 344100 € 379.00

**+ 1 REMS Spezial oil 5 l** Art.-No. 140100 € 44.00

€ 3,787.00

€ **2,379.00**

With universal automatic die head,  
automatically opening.

German quality product



**REMS Magnum – the super machine up to 3". Excellent round and clean thread up to 3" by 5 dies.**

**REMS Magnum 3000 L-T**

Threading machine for pipe threads ( $\frac{1}{16}$ )  $\frac{1}{2}$ –3", 16–63 mm, bolt threads (6)20–60 mm,  $\frac{1}{2}$ –2". With maintenance-free gear, safety foot switch with emergency stop, proven, self-reinforcing quick-clamping centring chuck, automatic lubrication cooling. Machine complete with tool sets  $\frac{1}{16}$ –2" and 2 $\frac{1}{2}$ –3", consisting respectively of universal automatic die head for all threads, including long threads, automatically opening, with automatic thread length for conical threads, dies for conical pipe threads ISO 7-1, EN 10226 (DIN 2999, BSPT) R right, pipe cutter, pipe inside burr remover, pressing lever. Tool shelf. Lightweight version L-T with removable, large oil basin and chip tray. 110 V, 50–60 Hz, 1700 W universal motor. 23 rpm. For workbench, stand or wheel-stand with material support.

Art. No. 380309 € 4,579.00

**+ REMS wheel stand** Art.-No. 344100 € 379.00

**+ 1 REMS Spezial oil 5 l** Art.-No. 140100 € 44.00

€ 5,002.00

€ **2,979.00**

With universal automatic die head,  
automatically opening.

German quality product



**REMS Magnum – the super machine up to 4". Excellent round and clean thread up to 4" by 6 dies.**

**REMS Magnum 4000 L-T**

Threading machine for pipe threads ( $\frac{1}{16}$ ) $\frac{1}{2}$ –4", 16–63 mm, bolt threads (6) 20–60 mm,  $\frac{1}{2}$ –2". With maintenance-free gear, safety foot switch with emergency stop, proven, self-reinforcing quick-clamping centring chuck, automatic lubrication cooling. With tool sets  $\frac{1}{16}$ –2" and 2 $\frac{1}{2}$ –4", consisting respectively of universal automatic die head for all threads, including long threads, automatically opening, with automatic thread length for conical threads, dies for conical pipe threads ISO 7-1, EN 10226 (DIN 2999, BSPT) R right, pipe cutter, pipe inside burr remover, pressing lever. Tool shelf. Lightweight version L-T with removable, large oil basin and chip tray. 110 V, 50–60 Hz, 1700 W universal motor. 23 rpm. For workbench, stand or wheel-stand with material support.

Art. No. 380444 € 5,294.00

**+ REMS wheel stand** Art.-No. 344100 € 379.00

**+ 1 REMS Spezial oil 5 l** Art.-No. 140100 € 44.00

€ 5,717.00

€ **3,879.00**

New

REMS TECHNOLOGY  
Li-Ion PLUS



Battery (accessory)



With hanging device



## Ultra bright hand and standing lamp. For cordless and mains operation. 145° continuously tiltable.

LED technology with high brilliance

Ergonomically designed handle with soft grip

Battery compartment integrated into the handle Li-Ion 14.4 V batteries or Li-Ion 230 V power supply for mains operation in place of Li-Ion 14.4 V battery as an accessory.

Practical, foldout hanging device

Lamp head continuously tiltable by 145° for better illumination.

Rapid charger for short charging times (1h) as accessory.

No memory effect for maximum battery performance.

### REMS cordless LED lamp Li-Ion

Hand and standing lamp for Li-Ion 14.4 V batteries or Li-Ion 230 V power supply.

Without battery, without rapid charger, without power supply. In blister pack.

Art. No. 175200 ~~29.90~~

€ **27.<sup>90</sup>**



## REMS MSG – rational sleeve welding

Heating elements according to DVS

High quality PTFE coating

### REMS MSG 63 FM Set 20-25-32

Heating element sleeve welding device for plastic tubes and mouldings made of PB, PE, PP, PVDF. Heating element 110 V, with PTFE-coated heating nozzles, heating sleeves for Ø 20, 25, 32 mm. Fixed temperature for PP tubes set to 260°C, with mechanical temperature regulation.

Shelf stand. Holder for workbench for fastening the device in a horizontal or vertical position.

Allen key for assembling and disassembling the heating nozzles and heating sleeves.

In sturdy steel case.

Art. No. 256231 ~~196.80~~

€ **499.<sup>00</sup>**



## REMS tile drilling – for dry drilling

Diamond-studded dry drill bits for fast and clean drilling into all types of tiles, e.g. ceramics, porcelain, granite, marble.

No water required.

Special wax filling inside the dry drill bit acts as coolant, becoming fluid as it is heated, cooling the dry drill bit.

Easy, free hand drilling by use of drilling aid with vacuum attachment.

Hexagon connection for 1/4" bit adapters.

Drive by cordless power drill/screwdriver REMS Helix (see page 7) and other power drill/screwdrivers/drilling machines (speed ≥ 1,000 rpm).

### REMS tile drilling Set 6-8-10

3 tile drill bits Ø 6, 8, 10 mm, drilling aid with vacuum attachment.

Art. No. 181700 ~~145.00~~

€ **99.<sup>00</sup>**

Sale through specialist dealers.

### REMS Ireland

Tel.: 01 8700 008

Email: IRL@rems.de

www.rems.de

Representative: Gerry Phipps

Mobile: 087 920 4068

follow us:



www.rems.de



www.youtube.com/remstools



www.facebook.com/remstools



www.twitter.com/remstools



VIDEOS  
www.youtube.com/remstools